

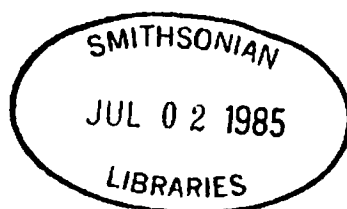
QL  
474  
A76  
1985X  
Fnt.

# AMERICAN INSECTS

A handbook of the insects of  
America north of Mexico

Ross H. Arnett, Jr., Ph.D.

Research Taxonomist  
Florida State Collection of Arthropods  
Gainesville, Florida



are attracted to sap oozing from wounded trees. There are 3 species.

72.1 *Periscelis* Loew

Three species, the following of which is probably the most common:

*P. annulata* (Fallén).

## 73. ASTEIIDAE (Asteiid Fly Family)

Length: 1–2 mm. Wing with  $R_1$  joining C in Basal third,  $R_{4+5}$  and M distinctly convergent distally; postocellar setae weak or absent. Nineteen rare species occur in the U.S. and Canada. Larvae are unknown.

## Subfamily Sigaloessinae

73.1 *Leiomyza* Macquart

Four species, the following of which is considered to be widespread, despite its spotty distribution:

*L. curvinervis* (Zetterstedt).

[73.2 *Phlebosotera* Duda (3 spp.); 73.3 *Astiosoma* Duda (4 spp.); 73.4 *Sigaloessa* Loew (4 spp.)]

## Subfamily Asteiinae

[73.5 *Asteia* Meigen (3 spp.); 73.6 *Loewimyza* Sabrosky (1 sp., *L.* unnamed sp.)]

## 74. MILICHIIDAE (Milichid Fly Family)

Length: 1–5 mm. Adults usually shiny black. Larvae live in decaying vegetation, manure, or carrion; few have been found in debris in ant nests and bird nests. There are 36 species in the U.S. and Canada.

## Subfamily Madizinae

[74.1 *Phyllomyza* Fallén (3 spp.); 74.2 *Neophyllomyza* Melander (2 spp.); 74.3 *Paramyza* Williston (1 sp., *P. nitens* (Loew)); 74.4 *Stomosis* Melander (2 spp.); 74.5 *Aldrichiomyza* Hendel (1 sp., *A. agromyza* (Hendel)); 74.6 *Madiza* Fallén (1 sp., *M. glabra* Fallén); 74.7 *Leptomotopa* Becker (2 spp.)]

74.8 *Desmometopa* Loew

Three species, the following of which is common:

*D. m-nigrum* (Zetterstedt). (1) n.e. US; (2) s.e. US; (3) s.w. US.

## Subfamily Milichiinae

[74.9 *Pholeomyia* Bilimek (12 spp.); 74.10 *Eusiphona* Coquillett (3 spp.); 74.11 *Milichia* Meigen (1 sp., *M. aethiops* Malloch); 74.12 *Milichiella* Giglio-Tos (5 spp.)]

## 75. CARNIDAE (Carnid Fly Family)

[From Milichiidae of authors]

Length: 1–2 mm. Arista micropubescent;  $M_1$  weak and unpigmented; mid-tibiae without preapical dorsal bristle. Little is known about the sixteen species in this family except that one is an ectoparasite of birds, as follows:

[75.1 *Hemeromyia* Coquillett (2 spp.); 75.2 *Meoneura* Rondani (13 spp.)]

75.3 *Carnus* Nitzsch

One species, as follows:

*C. hemapterus* Nitzsch. An ectoparasite of nestling birds. (1) n.e. NA; (2) s.e. US; (3) s.w. US.

## 76. BRAULIDAE (Bee Louse Fly Family)

Length: 1–1.5 mm. These are louselike insects with short, thick legs, vestigial eyes, and without wings or halteres. Each tarsal segment has a pair of comblike appendages. One species only, as follows:

76.1 *Braula* Nitzsch

*B. coeca* Nitzsch (Bee Louse). Eggs are laid among the brood of honey bees. Larvae feed on the bee's food. Adults attach themselves to the bee host. (See Fig. 29.48. (1), (2), (3), (4), (5), wherever bees are kept.

## Superfamily SCIOMYZOIDEA

This superfamily contains five families, as follows.

## 77. COELOPIDAE (Seaweed Fly Family)

Length: 3–10 mm. Metepisternum setose below posterior thoracic spiracle, the later without bristles or outstanding hair-like setae; thorax distinctly flattened. Our five species of these strongly bristled flies are confined to the seacoast, where the larvae breed in seaweed wrack.

77.1 *Coelopa* Meigen

This genus is divided into three subgenera: *Coelopa* s. str. (1 sp., *C. stejegeri* Aldrich), *Fucomyia* Haliday (2 spp.), and *Neocoelopa* Mallach (1 sp., *C. vanduzeei* Cresson). The following species are common:

*C. (Fucomyia) frigida* (Fabricius). The only eastern species. (1) LB, NF, ME, MA, RI.

*C. (Neocoelopa) vanduzeei* Cresson. (3) CA; (4) AK, BC, WA, OR.

[77.2 *Coleopina* Malloch (1 sp., *C. anomala* (Cole) (3) CA.)]

## 78. DRYOMYZIDAE (Dryomyzid Fly Family)

Length: 4.5–12 mm. Adults of some are often abundant in moist wood, sometimes on dung; others are found along sea-

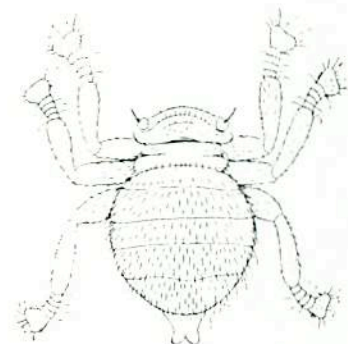


Fig. 29.48. (From Curran, 1934)